

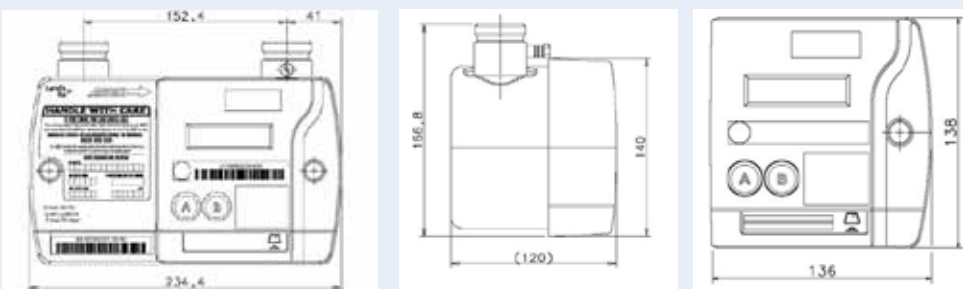


Technical Specifications

Libra 310 Gas Meter

Parameter	Characteristics
Applicable Metering Standards	BS EN 1359:1999, EN14236
Maximum Operating Pressure	75mbar
Maximum Flow Rate (Qmax)	6.00m ³ / Hr
Maximum Flow Rate (Qmin)	0.04m ³ / Hr
Pressure drop (max)	<2mB
Accuracy	Better than 2% (0.04m ³ - 6m ³ /Hr)
Gas Type	Natural gas (consisting mainly of methane) not LPG
Case Construction	Deep drawn coated steel
Gas Connections	1" BSP to BS746
Measurement Technology	Time of Flight
Shut off Valve	Internal electrically operated
Display	2 line by 16 character dot matrix with backlight
Battery Type	Lithium thionyl chloride 3.6v 'D' cell
Shock and Vibration (transit)	BS EN 1359:1999
Operation Temperature	-10°C to 40°C
Water Resistance	IP55
Humidity	95% non condensing
ESD	BS EN 61000-4-2 Level 3
RF Susceptibility	BS EN 61000-4-2 Level 3
RF Emissions	BS EN 61000-6-3
RF Communications	868.0 to 870.0Mhz nominal range 30 metres
RF Approvals	Meets requirements of R&TTE directive
Metrology Approvals	OFGEM
Weight	2.7 Kg
Battery Life	>10 years normal operation

Dimensions (mm)



Energy Controls Group Ltd.
 PO Box 1141
 Stratford upon Avon
 CV37 1XN
 TEL: 0845 230 4535
 FAX: 0845 230 4113
 Email: sales@econtrols.co.uk
 Web: www.econtrols.co.uk



ENERGY CONTROLS
Libra 310

SMART Gas Meter

Benefits

Libra 310 Gas Meter

Remote Communication and Configuration

+ The Libra 310 Gas Meter connects wirelessly to the Energy Controls 5236 Electricity Meter in order to provide a dual fuel SMART Metering solution.

+ When used as part of the dual fuel solution the Libra 310 provides the consumer with consumption information on current and historic usage values and associated costs via the ecoMeter Home Energy Monitor.

+ Data is transferred from the module to the 5236 SMART electricity meter via Low Power Radio (LPR) communication, sending the latest gas consumption readings to the electricity meter at half hour intervals. The Focus electricity meter then passes the data to the ecoMeter Home Energy Monitor also using (LPR) communication.

+ The data sent from the gas module to the electricity meter can also be sent back to the utility software via SMS messaging.

+ The consumer can view the consumption and cost information associated with the gas usage via the ecoMeter displays.

+ The electricity meter will return the data to the back office either by a scheduled read or ad-hoc request for consumption data.

+ The two way communication medium between the back office and the electricity meter enables configuration for the gas meter can be sent remotely from the back office via the SMS messaging facility. Once the configuration details have been received by the electricity meter, the details are then sent to the gas meter via LPR when the next half hour communication window is attained.

Key Features

Libra 310 Gas Meter

Remote Valve Operation

The remote functionality of the gas module and back office system enables the operation of remote disconnect or reconnect of the gas meter valve. The valve can be opened or closed by performing a simple operational command using the back office software, the command is sent via SMS to the 5236 electricity meter which in turn sends the command to the gas meter via LPR.

Tamper Alerts

In event of a tamper being detected at the gas meter LPR communication with the 5236 electricity meter allows instantaneous alerts to be sent to the back office system to indicate when a tamper has been detected at the gas meter.

Tariff Operation

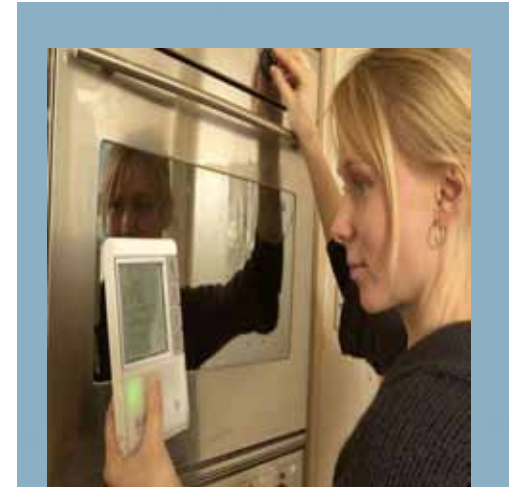
Because the gas meter is fitted with a real time clock (RTC) it is capable of supporting the use of block tariffs which can be used to create configurable billing periods. Future tariffs may also be loaded to the meter for activation at a predefined time.

Remote Meter Reading

Gas usage data can be sent to the back office system using a series of commands. The user can define a scheduled period where the values can be returned to the system, or an as-hoc request can be performed to return the latest data readings. The meter readings can also be used to record half hour profiling.

Installation

The installation processes are controlled by PIN entry to bind the gas and electricity meter together, therefore removing the need for expensive programming and service tools. Once in normal operation the gas meter will update the electricity meter with data every half hour.



The Libra 310 Gas Meter works in conjunction with the 5236 electricity meter and ecoMeter Home Energy Monitor via Low Power Radio Communications providing the complete Dual Fuel system

